

WHERE MATH AND SCIENCE

TAKE FLIGHT

iFLY MAKES LEARNING
FUN WITH STEM

The Science & Engineering of iFLY

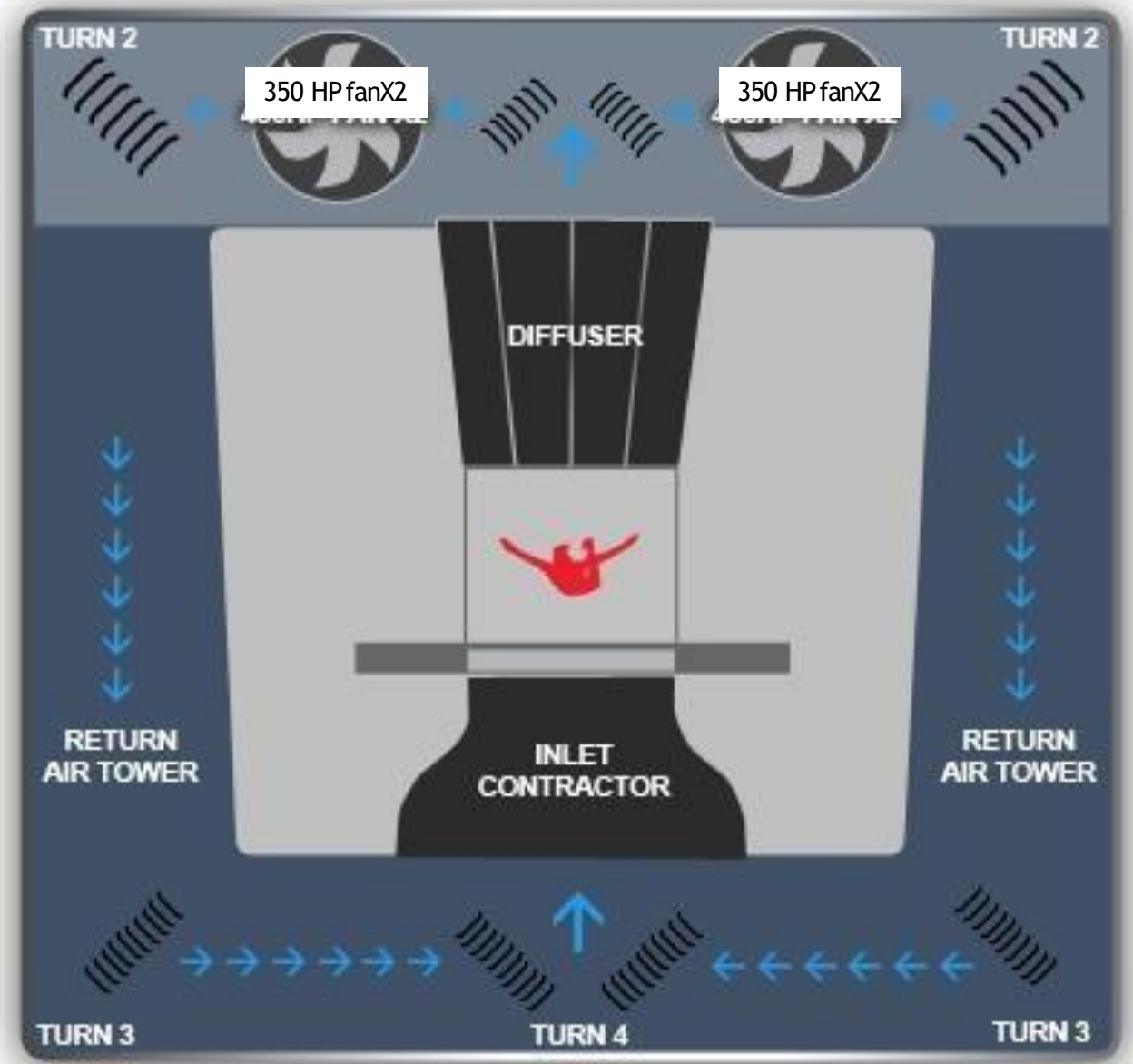




STEM is fun!

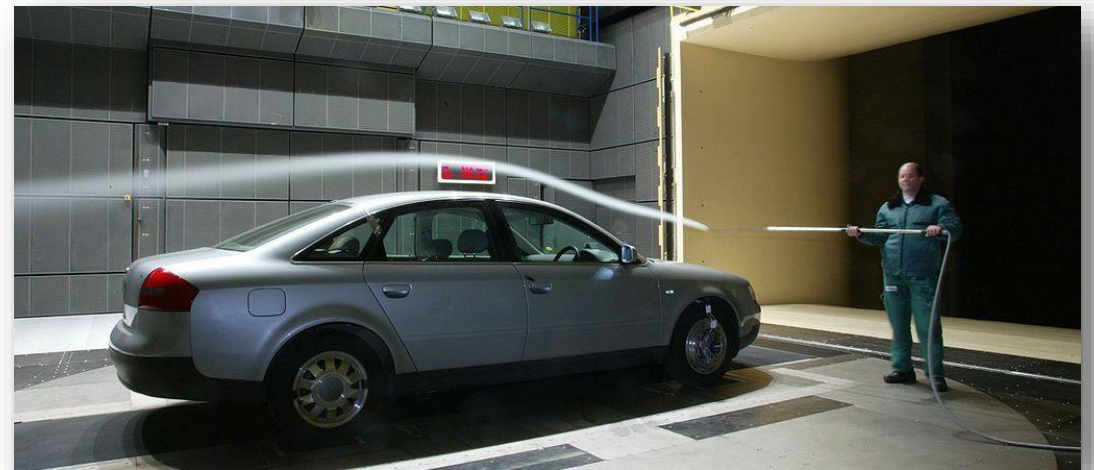
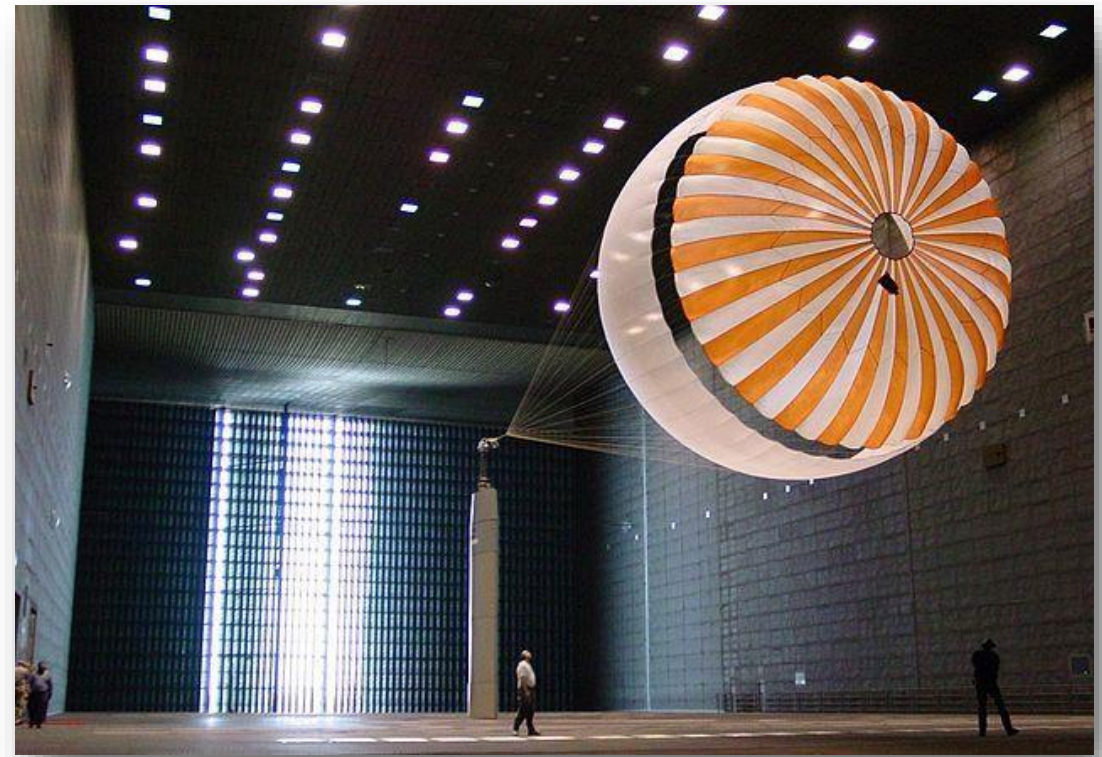
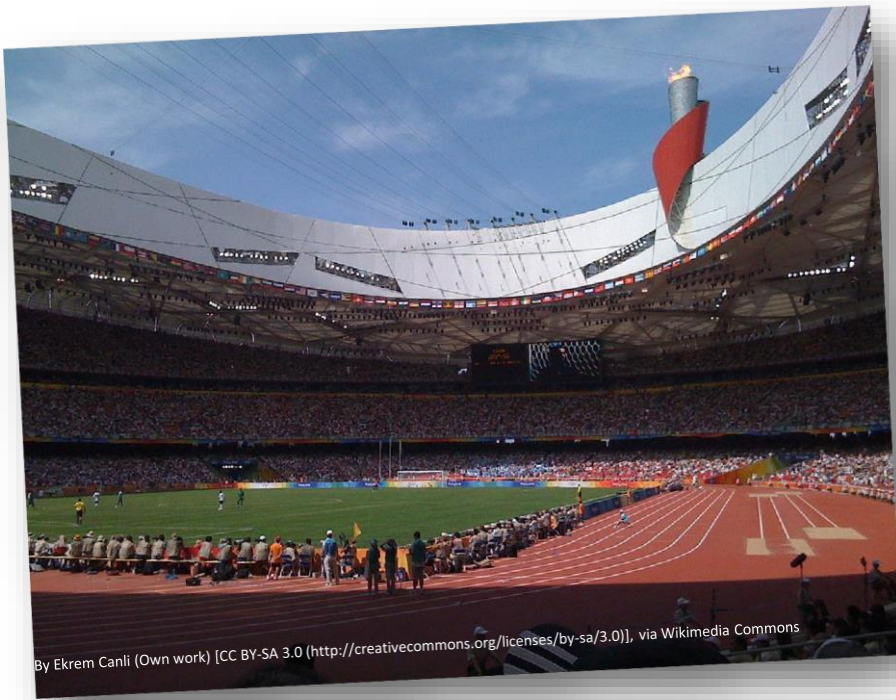


This is a Closed Loop Vertical Wind Tunnel.



Wind tunnel testing





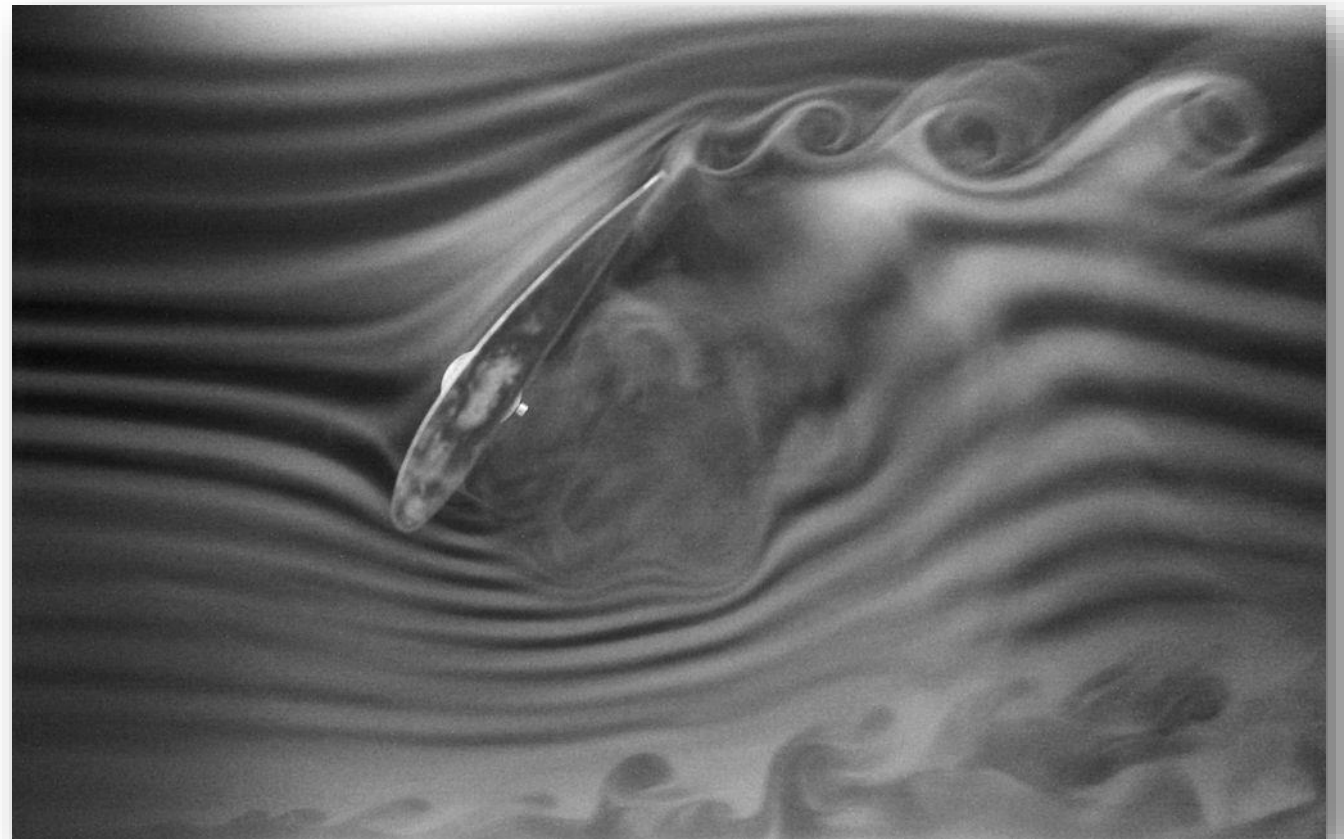


Fluids

vs.

Solids

Air
is a
fluid.



Moving air can cause a force.



**force of air
pushing you up**



**gravity
pulling you down**

**force of air
pushing you up**



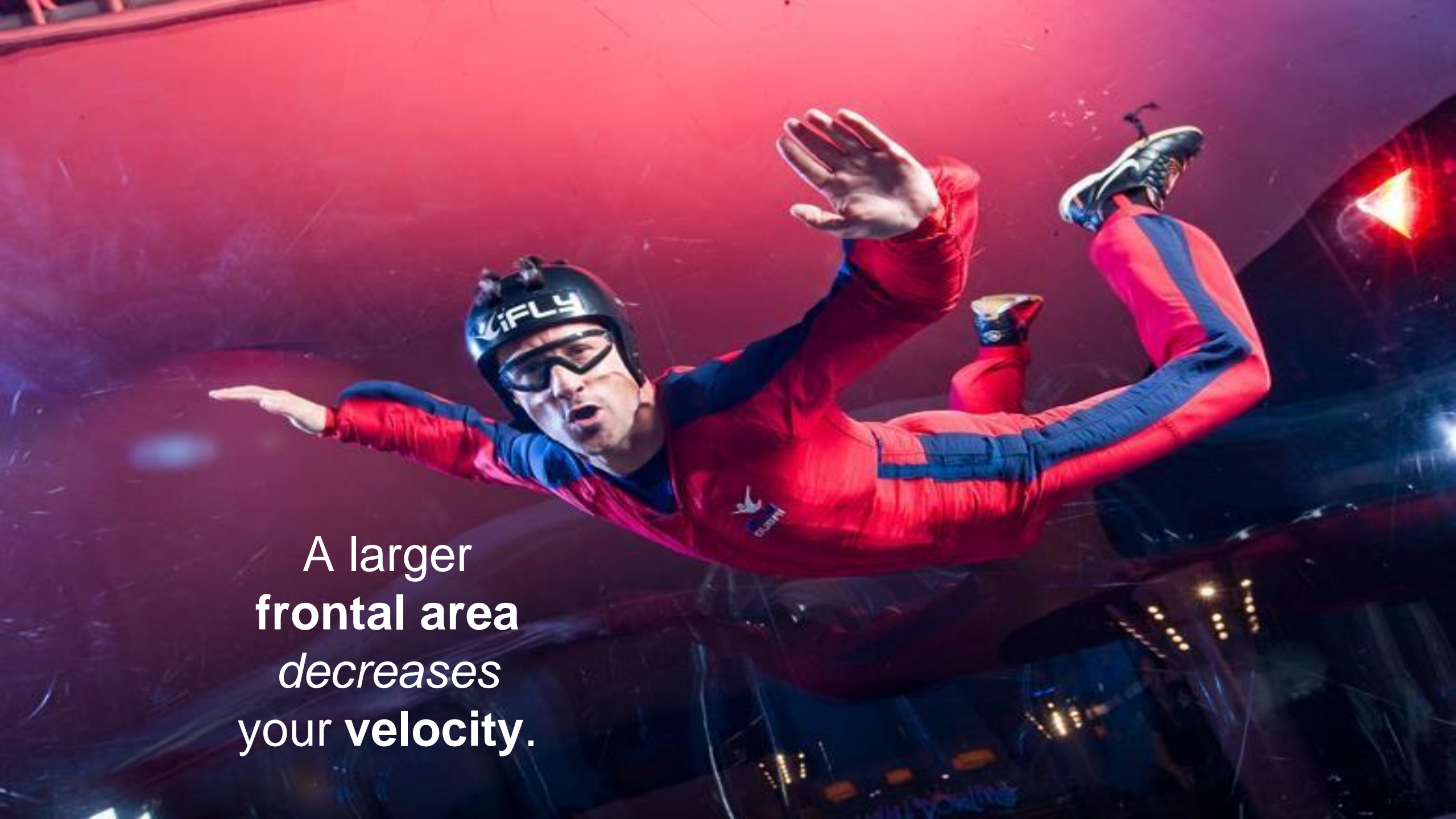
**gravity
pulling you down**





A smaller
frontal area
increases
your **velocity**.



A skydiver in a red and blue jumpsuit is shown in a horizontal, spread-eagle position, falling through a red-tinted sky. The skydiver is wearing a black helmet with "iFLY" written on it and goggles. The background is a dark, red-tinted sky with some blurred lights and structures, suggesting an indoor skydiving facility. The skydiver's arms are spread wide to the sides, and their legs are also spread apart, maximizing their frontal area.

A larger
frontal area
decreases
your **velocity**.





By User Alers onsv.wikipedia - Originally from sv.wikipedia

Let's try it out!



WHERE MATH AND SCIENCE

TAKE FLIGHT

iFLY MAKES LEARNING FUN WITH STEM

The Science & Engineering of iFLY

